



Spot Commodity

Europe Warehouse



HIGH VOLTAGE STACK BATTERY 5.5KWh-26.4KWh

Enershare Battery CORE 1.0
Up to 6 towers in parallel
From 5.5 kWh to 153.6 kWh

Enershare Technology Company / Enershare Tech Company Limited

Tel: 0086-755-28748610 E-mail: wesleyyan@enershare.cn

<https://www.enershare.cn>

The Enershare Battery CORE 1.0 Series 2 Models for all Scenario

Enershare Battery CORE 1.0 Series, Sparkling With Innovation, Provides You With Intelligent Integration Storage Solutions. There Are 2 Models Under High Voltage Platform, Which Are Enershare Power-CORE 1.0 and Enershare Energy-CORE 1.0 Both Of Them Can Handle Up To A Voltage Of 600 V Sharing Our Minted Smart BMS .

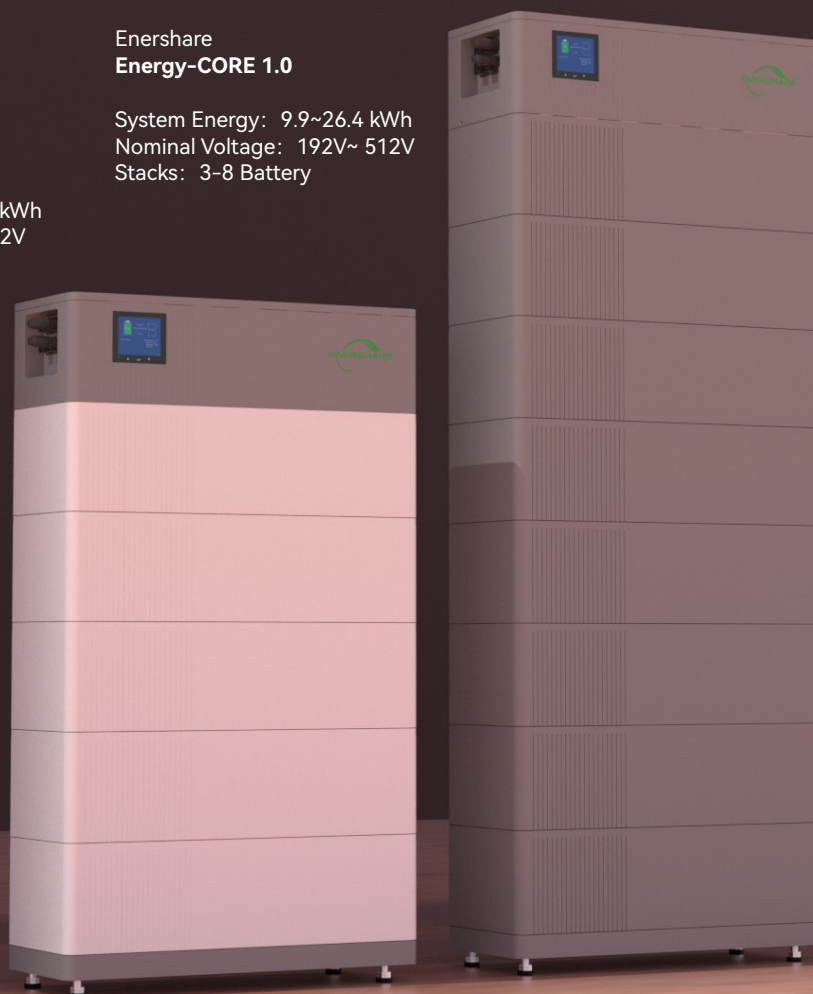
Enershare Battery CORE 1.0 Series Will Inaugurate a New Era In The Residential Energy Storage Industry.

Enershare Power-CORE 1.0

System Energy: 5.52~13.80 kWh
Nominal Voltage: 204V ~ 512V
Stacks: 2-5 Battery

Enershare Energy-CORE 1.0

System Energy: 9.9~26.4 kWh
Nominal Voltage: 192V~ 512V
Stacks: 3-8 Battery



Smart System Design

- LFP Chemistry
- Automatic Inverter Configuration (set-up free)
- Automatic Battery System Configuration (set-up free)
- Intelligent Display (Key Info, Err code, SOC)
- Power and Energy for all applications
- 1 and 3 phase, on / off grid / back up support
- No DC/DC, high efficiency system layout
- Up to 6 towers in parallel



Smart Installation Design

- Stackable Design, Easy Installation, $\leq 36.5\text{kg}$ / Stack
- Slim and Compact
- Plug-Play (Direct Connect RJ45)
- Aluminum Housing
- IP65 Protection

Enershare Power-CORE 1.0 is a Power Type With a Capacity Of 2.76 kWh, 102.4 V In Each Battery Stack.
 Enershare Energy-CORE 1.0 is an energy type with a capacity of 3.2 kWh, 64 V in Each Battery Stack.



Models	Power-CORE 1.0	Energy-CORE 1.0
Smart BMS 1.0		
Operating Voltage Range	120-600V	120-600V
Max Output Current	30 A	30 A
Peak Output Current	50 A (5s)	50 A (5s)
Communication	CAN 2.0/ RS485	CAN 2.0/ RS485
Stacks Scalability	2 To 5 Stacks	3 To 8 Stacks
Dimensions (H/W/D)	175* 650* 260 mm	175* 650* 260 mm
Weight	≤ 20 kg	≤ 20 kg



Battery Stack	Power-CORE 1.0	Energy-CORE 1.0
Usable Energy	2.76 kWh	3.3 kWh
Battery Cell Technology	LFP	LFP
Operation Temperature	-10~55 °C	-10~55 °C
Nominal Voltage	102.4 V	64 V
Operating Voltage Range	86.4~116.8 V	54~73 V
Max Output Current	25 A	30 A
Peak Output Current	50 A (5s)	50 A (5s)
Dimensions (H/W/D)	175* 650* 260 mm	175* 650* 260 mm
Weight	≤ 35 kg	≤ 36.5 kg



Stackable

Up to 2-8 battery 5.5KWh-26.4KWh

Increase the capacity freely in lifetime It grows as your family grows

LCD Screen

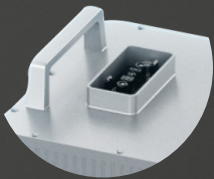


Smart BMS



Aluminum Case

Invisible Handles



Battery Stacks

Base & Legs

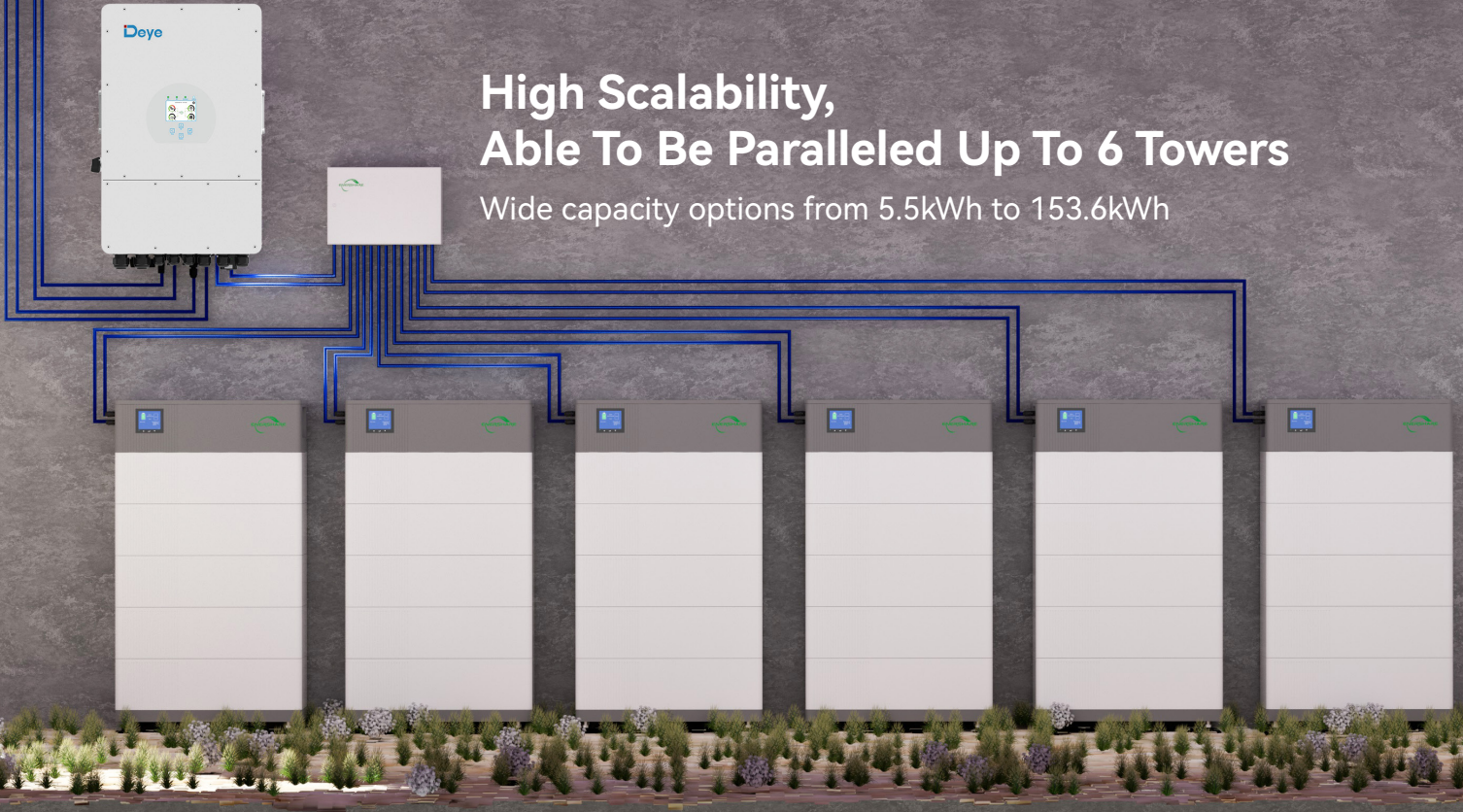
Stackable battery units with direct connection
No additional Wires, No additional Screws

1 Person Work
Time saving, Cost Saving



High Scalability, Able To Be Paralleled Up To 6 Towers

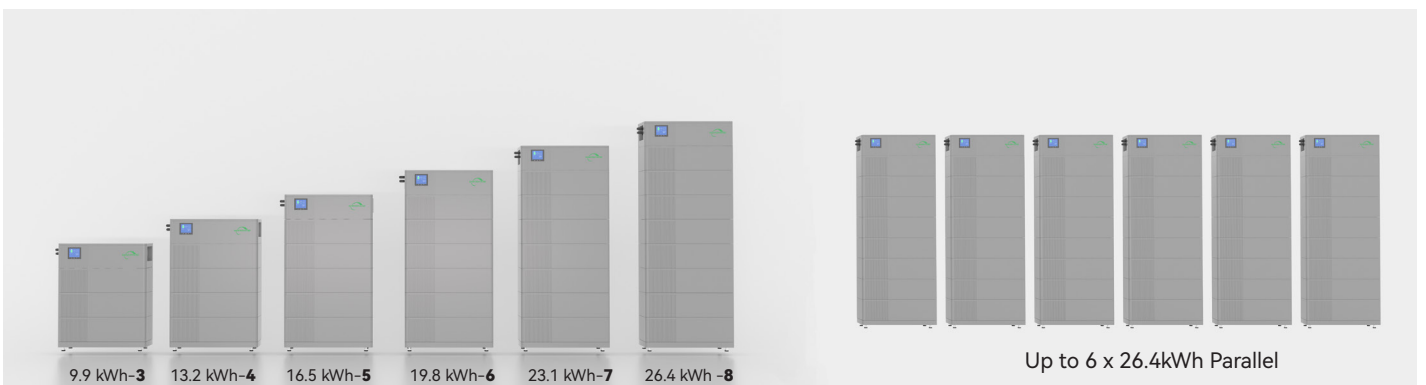
Wide capacity options from 5.5kWh to 153.6kWh



Enershare **Power-CORE 1.0**

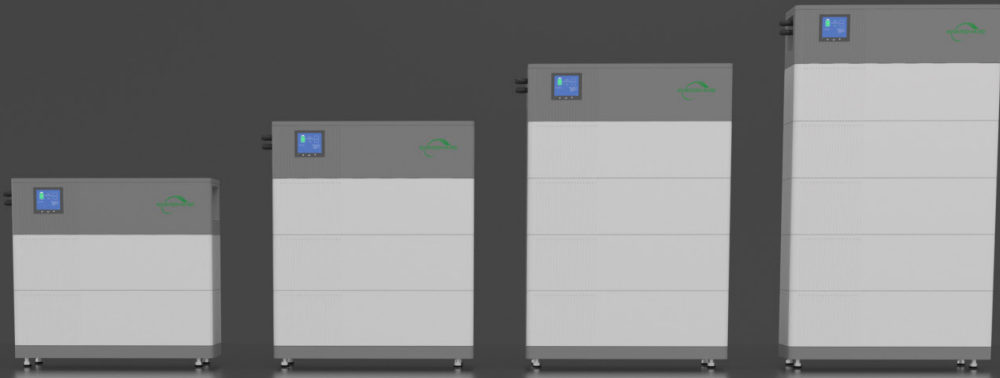


Enershare **Energy-CORE 1.0**



Enershare Power-CORE 1.0

5.5KWh-13.8KWh High Voltage Stack Battery



Technical Specification

Number of Stacks	2	3	4	5
Usable Energy	5.52 kWh	8.28 kWh	11.04 kWh	13.80 kWh
Max Output Current	25 A			
Peak Output Current	50 A (5s)			
Nominal Voltage	204.8 V	307.2 V	409.6 V	512 V
Operating Voltage Range	172.8~233.6 V	259.2~350.4 V	345.6~467.2 V	432~584 V
Scalability	Up to 6 towers (From 5.36 kWh to 80.4 kWh)			
Dimensions (H*W*D) (mm)	625* 650* 260mm	800* 650* 260mm	975* 650* 260mm	1150* 650* 260mm
Weight	90 kg	125 kg	160 kg	195 kg
Operation Temperature	-10~55 °C			
Protection Rating	IP65			
Round-trip Efficiency	≥ 96 %			
Certification & Compliance	UKCA / IEC62619 / CEC / CE / UN38.3			
Applications	ON Grid / ON Grid Backup / OFF Grid			
Warranty	10 Years			

Enershare Energy-CORE 1.0

9.9KWh-26.4KWh

High Voltage Stack Battery



Technical Specification

Number of Stacks	3	4	5	6	7	8
Usable Energy	9.9 kWh	13.2 kWh	16.5 kWh	19.8 kWh	23.1 kWh	26.4 kWh
Max Output Current	30 A					
Peak Output Current	50 A (5s)					
Nominal Voltage	192 V	256 V	320 V	384 V	448 V	512 V
Operating Voltage Range	162~219 V	216~292 V	270~365 V	324~438 V	378~511 V	432~584 V
Scalability	Up to 6 towers in parallel (From 9.6 kWh to 153.6 kWh)					
Dimensions (H*W*D) (mm)	800* 650*260 mm	975* 650*260 mm	1150* 650*260 mm	1325* 650*260 mm	1500* 650*260 mm	1675* 650*260 mm
Weight	129.5 kg	166 kg	202.5 kg	239 kg	275.5 kg	312 kg
Operation Temperature	-10~55 °C					
Protection Rating	IP65					
Round-trip Efficiency	≥ 96 %					
Certification & Compliance	UKCA / IEC62619 / CEC / CE / UN38.3					
Applications	ON Grid / ON Grid Backup / OFF Grid					
Warranty	10 Years					